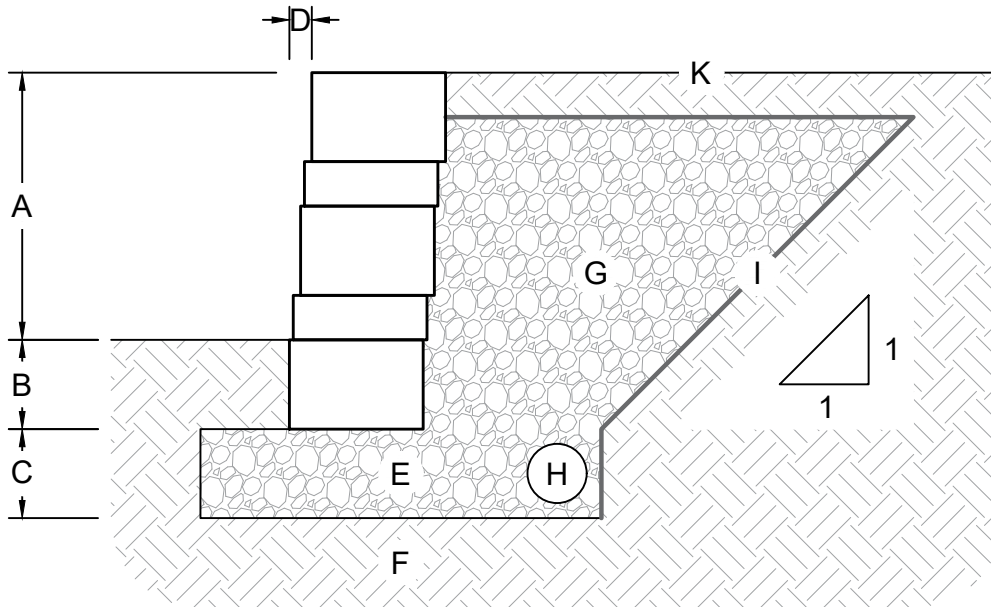


PRELIMINARY DETAIL
NOT FOR FINAL CONSTRUCTION



TYPICAL GRAVITY RETAINING SECTION

(NO SCALE)

- A. Wall height above grade (varies)
- B. Wall buried beneath grade (min. 6")
- C. Leveling pad depth (min. 6")
- D. 1/2" setback per 6" course (5')
- E. Crushed stone leveling pad
- F. Foundation soil compacted to 95% max. dry density
- G. Drainstone (ASTM #57 on 1:1 slope behind wall)
- H. 4" corrugated perforated drain pipe
- I. Min. 3.5 oz. non-woven geotextile fabric (recommended)
- J. Finish grade to drain away from the wall

This drawing is for reference only. Determination of the suitability and/or manner of use of any details contained in this document is the sole responsibility of the design engineer of record. Final project designs, including all construction details, shall be prepared by a licensed professional engineer using the actual conditions of the proposed site.

DRAWN BY: BOB/CARISSA

TITLE:

APPROVED BY:

**BELVEDERE TYPICAL GRAVITY
RETAINING WALL**

DATE: 11/15/2021

SHEET NO.: 1 OF 1

DRAWING TITLE: Belvedere Typical Cross Section.dwg



05481 US 31 SOUTH, CHARLEVOIX, MI 49720
877-777-6558 • highformat.com