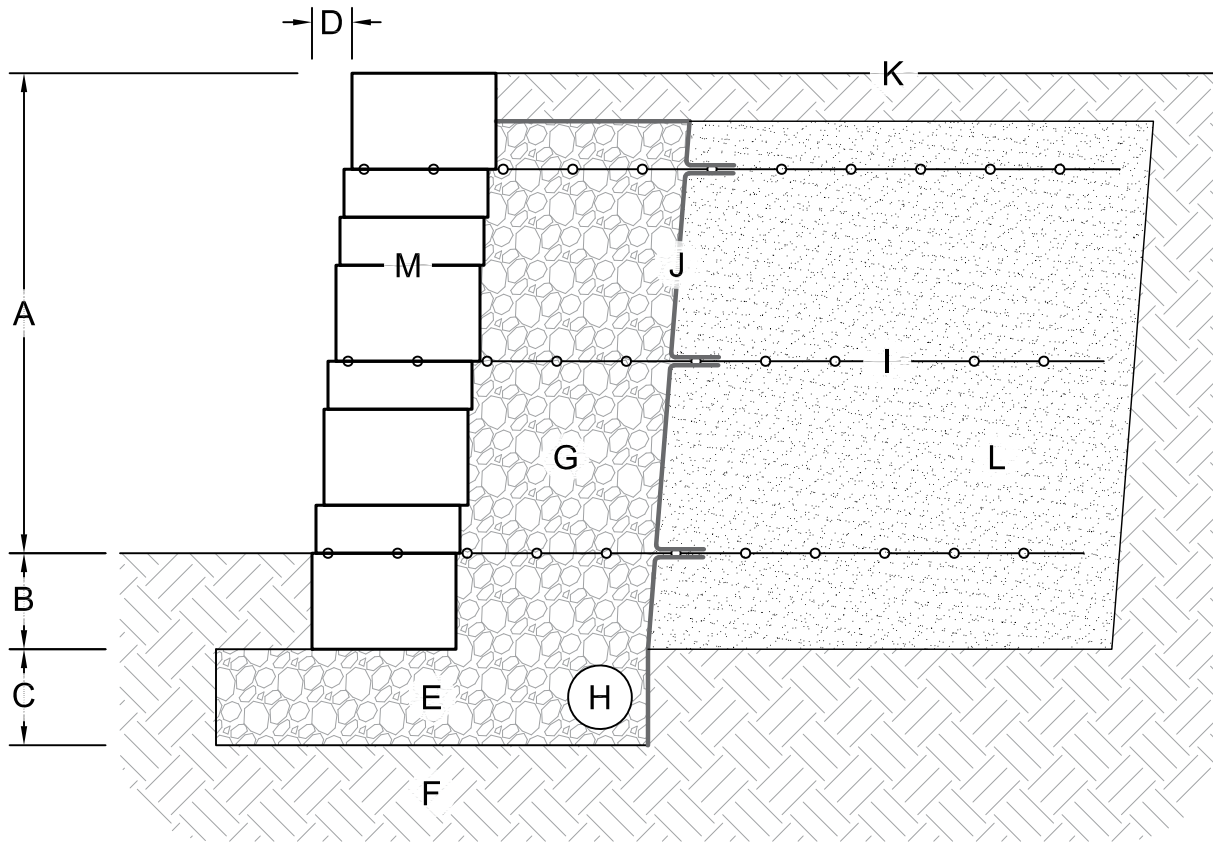


PRELIMINARY DETAIL
NOT FOR FINAL CONSTRUCTION



TYPICAL REINFORCED RETAINING SECTION
(NO SCALE)

- A. Wall height above grade (varies by design)
- B. Wall buried beneath grade (varies by design, min. 6 in.)
- C. Leveling pad depth (varies by design, min 6 in.)
- D. 1/2" setback per 6" course (5' batter) recommended
- E. Crushed stone leveling pad
- F. Foundation soil compacted to 95% max. dry density
- G. Drainstone (ASTM #57, min. 12" behind wall)
- H. 4" corrugated perforated drain pipe
- I. Geogrid (lengths and vertical placement per design)
- J. Non-woven geotextile fabric
- K. Finish grade to drain away from the wall
- L. Reinforced soil compacted to 95% max. dry density
- M. Belvedere wall blocks

This drawing is for reference only. Determination of the suitability and/or manner of use of any details contained in this document is the sole responsibility of the design engineer of record. Final project designs, including all construction details, shall be prepared by a licensed professional engineer using the actual conditions of the proposed site.

DRAWN BY: BOB/CARISSA	TITLE: BELVEDERE TYPICAL REINFORCED RETAINING WALL DETAILS
APPROVED BY:	
DATE: 4/1/2024	
SHEET NO.: 1 OF 1	DRAWING TITLE: Belvedere Typical Cross Sections [rev 2024].dwg

TITLE: BELVEDERE TYPICAL REINFORCED RETAINING WALL DETAILS	
DRAWING TITLE: Belvedere Typical Cross Sections [rev 2024].dwg	



05481 US 31 SOUTH, CHARLEVOIX, MI 49720
877-777-6558 • highformat.com