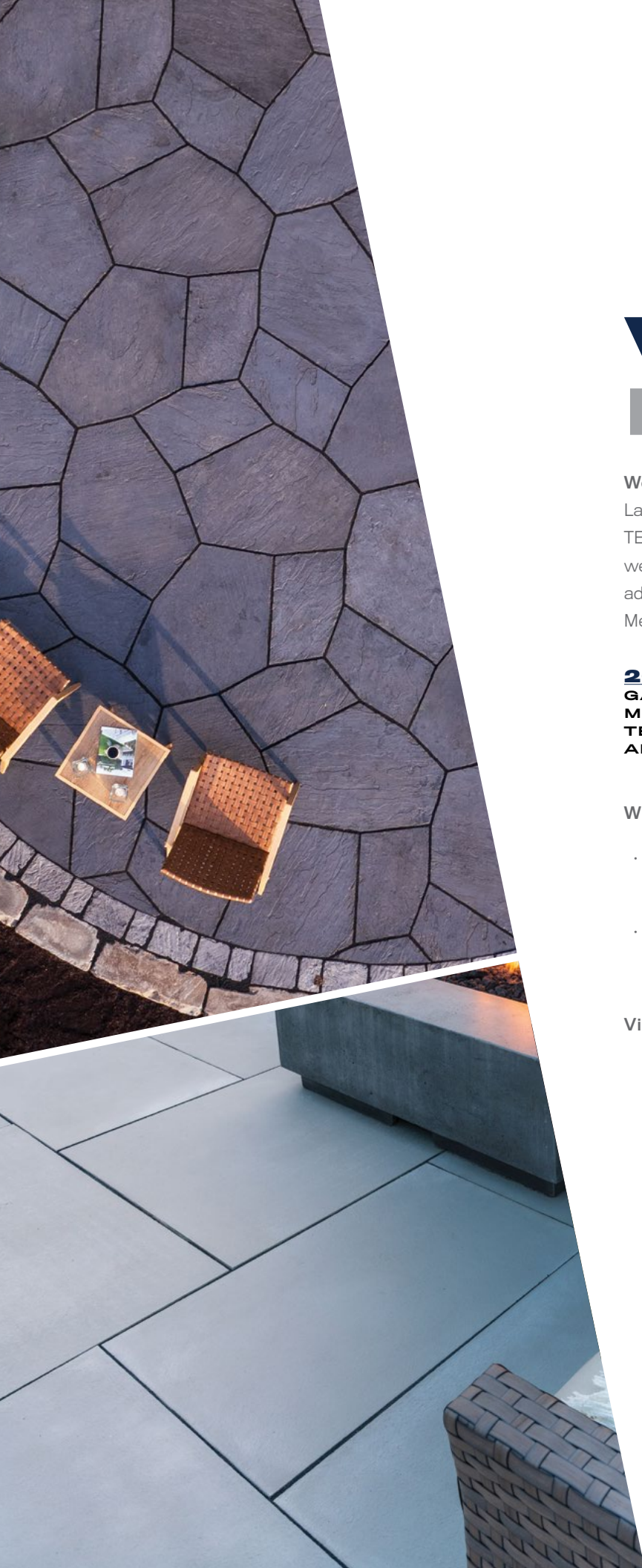




HARDSCAPES CATALOG V.26







# WHAT'S NEW?

## We've updated our TEKTRAMAT® line!

Last year, we began rolling out our Second Generation TEKTRAMAT® products, starting with Tetra and Arcadia. In 2026, we're excited to share that our cross-over is complete with the addition of Gauge Premier (replacement for Gauge Select) and Metro (replacement for Mid-Century).

**2026 PRODUCTS**  
GAUGE PREMIER  
METRO  
TETRA  
ARCADIA

**DISCONTINUED**  
GAUGE SELECT  
MID-CENTURY  
MONTROSE

## What makes Second Generation TEKTRAMAT® different?

- Thicker profile (1.25") to increase slab stability and flexural strength
- Reduced overall dimensions for easier handling and installation

Visit each product page to learn more.

## ...AND THERE'S NEW WETCAST

### RICHLAND WALL

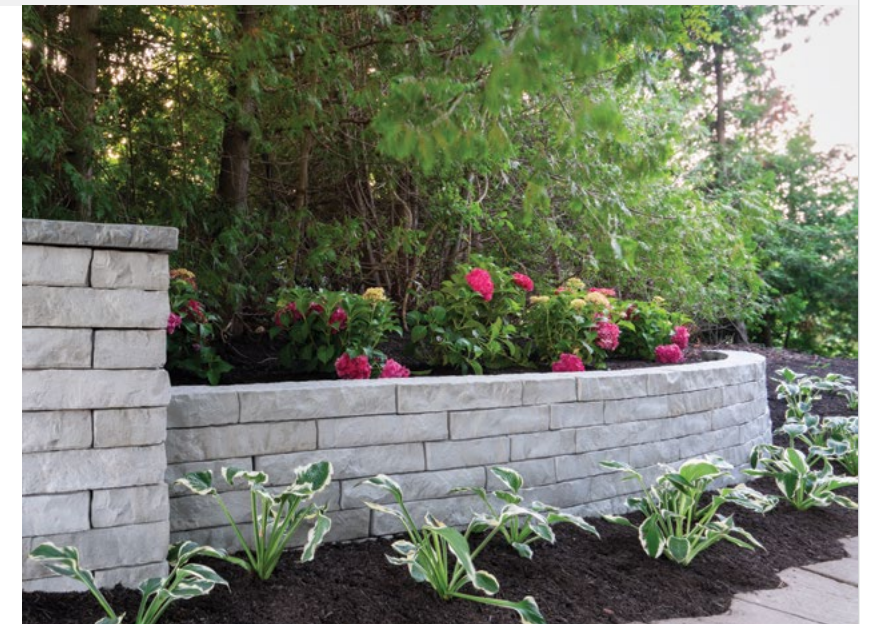
p. 64

- Retaining and freestanding wall applications with the look of snapped limestone drywall
- Consistent 4" thickness with five lengths from 15"-27" on the same pallet
- Wall Blocks have stone texture on front/back, Corner Blocks have stone texture on three sides, Cap Blocks have stone texture on front/back/top
- Wall can turn on a minimum 8' radius
- A corner pallet can create a 26"x26"x40" column, compatible with a 30" Dimensional Column Cap or 28" Camden Cap

Wall Block  
Untextured Flat Top



Cap Block  
Textured Top



### HEARTWOOD STEP

p. 100

- Matches the weathered, timber face texture of Heartwood Wall (shown below, left)
- Unit dimensions: 48"x24"x6"



4' Step  
Timber Face Texture





# TABLE OF CONTENTS

## MATERIALS & TECHNOLOGIES

6

## INSPIRATION

8-53

## WALLS



**GRAND LEDGE™**  
54



**KODAH®**  
56



**OUTCROPPING**  
58



**BELVEDERE®**  
60



**HEARTWOOD**  
62



**RICHLAND**  
64



**DIMENSIONAL**  
66

## SLABS & PAVERS



**GAUGE PREMIER**  
68



**METRO**  
70



**TETRA**  
72



**ARCADIA**  
76



**GRAND FLAGSTONE**  
78



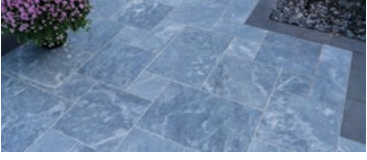
**DIMENSIONAL FLAGSTONE**  
80



**NEW MISSION**  
82



**SUPERIOR STEPPERS**  
84



**NATURAL STONE**  
86

## STEPS



**EMPIRE**  
96



**IRREGULAR**  
98



**OTHER**  
100

## FIRE FEATURES



**BELVEDERE® FIRE PIT**  
102



**KODAH® FIRE PIT**  
104



**DIMENSIONAL FIRE PIT**  
106

## CAPS & ACCESSORIES



**COPING & TREADS**  
108



**CAPS**  
112

## WARRANTY

114



# MATERIALS + TECHNOLOGIES



## ROSETTA® WETCAST

Concrete products utilizing our wetcast production system, offering benefits including:

- Detailed, natural looking textures
- Seamless blending of colors throughout
- Long-term structural integrity



## VIBRALOCK®

An integrated surface technology that is directly incorporated into the production process of many of our wetcast slab and paver products to deliver benefits including:

- A harder surface with greater resistance to abrasion
- More vibrant and enduring color
- Increased resistance to efflorescence



## TEKTRAMAT®

Our proprietary material based around Ultra High Performance Concrete technology (UHPC). Products made from this material offer benefits including:

- Unsurpassed durability including a salt proof surface
- Ultra-realistic replication of fine detail
- Efficient installation resulting from large yet thinly formatted shapes



## NATURAL STONE

Premium natural stone products including pavers, slabs, coping and more, with benefits including:

- Precise dimensions for gauged products
- Vibrant and unique color patterns
- Timeless appeal

# COLORS

Want to better understand our Rosetta® Wetcast colors in further detail?

Our colors are created with one-, two-, or three-way color blends. Integral pigments are added to the raw materials, producing subtle shades and natural variations throughout each block or paver. The time of day, angle of light and weather conditions all influence the final appearance of color in our project photography. We do our best to produce print and digital materials that accurately reflect the true shades and tones; however, final color selections should always be made from actual materials available at your local dealer.



## FOND DU LAC (2-TONES)

A timeless blend of warm beige and neutral gray. It goes with everything!



## LIMESTONE (1-TONE)

Light gray hues, aping natural limestone from the Great Lakes region.



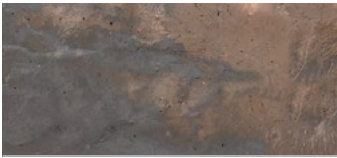
## SUPERIOR BUFF (1-TONE)

A warm beige to accent a light-toned wall, or to contrast a dark one. Available only for Dimensional Coping and Caps.



## SLATE GRAY (2-TONES)

A versatile blend of light and dark gray. Stands out in modern designs.



## TERRAIN (2-TONES)

A bold chestnut brown and medium gray blend, when rich earth tones are a must.



## BLUESTONE (1-TONE)

Cool sage-slate tone, resembling natural bluestone of the Mid-Atlantic states. Available only for certain flatwork and accessory products.



## LAKESHORE BLEND (3-TONES)

A tritone blend of beige, brown and gray, common in the Great Lakes region. Available only for Outcropping.









Grand Ledge™ Wall  
Color: Limestone



4' Dimensional Steps as Coping  
Color: Limestone



11  
HIGHFORMAT.COM





Tetra Natural Cleft Slabs  
Color: Dune



Grand Ledge™ Wall  
Color: Limestone





Outcropping Wall and Freestanding Blocks in Fond Du Lac





Outcropping Wall  
Color: Fond Du Lac



Kodah® Wall  
Color: Fond Du Lac



Devon Antiqued Travertine  
in French Pattern









Dimensional Coping  
Color: Slate Gray



Richland Wall  
Color: Fond Du Lac





Grand Ledge™ Wall  
Color: Fond Du Lac



4' Dimensional Steps as Coping  
Color: Fond Du Lac





Heartwood Wall  
Color: Slate Gray



Grand Flagstone  
Color: Fond Du Lac



4' Empire Steps  
Color: Fond Du Lac





Grand Ledge™ Corners  
Color: Fond Du Lac



5' Empire Steps  
Color: Fond Du Lac



Grand Ledge™ Wall  
Color: Fond Du Lac









A

B



Outcropping  
Color: Fond Du Lac



Grand Ledge™ Wall  
Color: Fond Du Lac





Dimensional Flagstone  
Color: Fond Du Lac



Dimensional Steps  
Color: Fond Du Lac



Grand Flagstone  
Color: Fond Du Lac



Belvedere® Fire Pit  
Color: Fond Du Lac









Grand Ledge™ Wall in Slate Gray





A

B

C





Outcropping Wall in Slate Gray









A

B





A

B



Kodah® Wall  
Color: Limestone



Silverek Travertine Coping with  
Splitface Edge (Special Order)





Azure Antiqued Marble in French Pattern



Azure Sandblasted Marble Coping with Eased Edge (Special Order)



Azure Antiqued Marble Coping with Eased Edge (Special Order)



Heartwood Wall Color: Slate Gray



Camden Coping Color: Charcoal





Grand Ledge™ Wall in Fond Du Lac









Learn More

Grand Ledge™ Wall in Fond Du Lac

## GRAND LEDGE™

The look of a natural ledgerstone: bold in scale, with consistent dimensions for faster installation.

**MATERIALS & TECH**  
ROSETTA® WETCAST

### BLOCK DIMENSIONS

- 36"L x 12"H x 20"D
- 48"L x 12"H x 20"D
- 60"L x 12"H x 20"D
- 72"L x 12"H x 20"D
- Corner Blocks also available

Dimensions are nominal

COLOR  
OPTIONS

FOND DU LAC



SLATE GRAY



LIMESTONE



TERRAIN



Final color selection should be made from actual material which can be viewed at your local dealer location.




[Learn More](#)

## KODAH®

Modern lines married to classic styling with snapped limestone textures stretched to great lengths for creating retaining walls that make a statement.

**MATERIALS & TECH**  
ROSETTA® WETCAST

### BLOCK DIMENSIONS

- 12"L x 10.5"D x 6"H
- 21"L x 10.5"D x 6"H
- 30"L x 10.5"D x 6"H
- 42"L x 10.5"D x 6"H
- Corners: 21"L x 10.5"D x 6"H

Dimensions are nominal

Kodah® Wall in Terrain

FOND DU LAC



SLATE GRAY



LIMESTONE



TERRAIN



COLOR  
OPTIONS

Final color selection should be made from actual material which can be viewed at your local dealer location.





Learn More

Outcropping in Fond Du Lac

# OUTCROPPING

Bold in scale and beautifully rustic with weathered limestone texture, consistent dimensions for rugged strength and faster installation.

**MATERIALS & TECH**  
ROSETTA® WETCAST

## RETAINING BLOCK DIMENSIONS

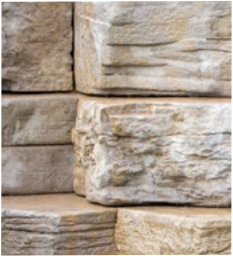
- 24"L x 6"H
- 36"L x 6"H
- 42"L x 12"H
- 48"L x 6"H
- 36"L x 12"H
- 42"L x 12"H
- 48"L x 12"H
- 54"L x 12"H
- 60"L x 12"H
- 66"L x 12"H
- 72"L x 12"H
- 60"L x 18"H
- 48"L x 24"H

• Corner and Freestanding Blocks also available.

Retaining Blocks are 18-24" deep. Pallets are assembled with multiple block sizes. All dimensions are nominal.

COLOR  
OPTIONS

FOND DU LAC



SLATE GRAY



LAKESHORE BLEND



LIMESTONE



TERRAIN



Final color selection should be made from actual material which can be viewed at your local dealer location.





Learn More

Belvedere® Wall in Fond Du Lac

## BELVEDERE®

Rustic in aesthetic and rich in texture with the visual impact of a weathered edge, for garden walls and seat walls that stand without peer.

**MATERIALS & TECH**  
ROSETTA® WETCAST

### BLOCK DIMENSIONS

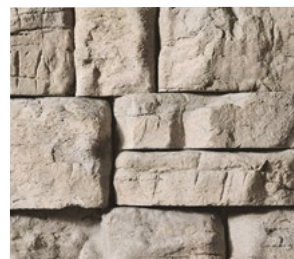
- 6"L x 9"D x 3"H
- 12"L x 9"D x 3"H
- 18"L x 9"D x 3"H
- 6"L x 9"D x 6"H
- 12"L x 9"D x 6"H
- 18"L x 9"D x 6"H

• Corner and Coping Blocks also available.

Wall blocks are wedge shaped to create natural looking straight and curved walls. Weathered limestone faces on front and back. Dimensions are nominal.

COLOR  
OPTIONS

FOND DU LAC



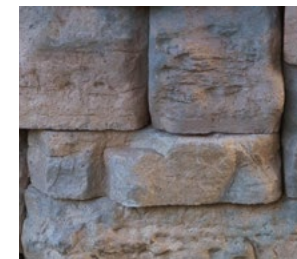
SLATE GRAY



LIMESTONE



TERRAIN



Final color selection should be made from actual material which can be viewed at your local dealer location.





Heartwood Wall in Slate Gray



Learn More

## HEARTWOOD

Beautiful, wood-grain textures with long lasting durability, excellent for freestanding seat walls and garden retaining walls.

**MATERIALS & TECH**  
ROSETTA® WETCAST

### BLOCK DIMENSIONS

- Full Block: 42"L x 8"D x 6"H
- Half Block: 21"L x 8"D x 6"H

Dimensions are nominal

COLOR  
OPTIONS

FOND DU LAC



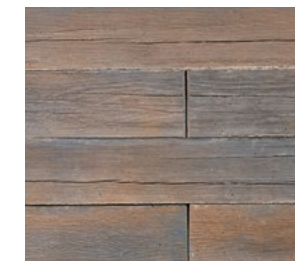
SLATE GRAY



LIMESTONE



TERRAIN



Final color selection should be made from actual material which can be viewed at your local dealer location.





Learn More

Richland Wall in Limestone

## RICHLAND

This lightweight, easy to hand-install block has multiple lengths and crisp snapped limestone textures, for an organic “random” appearance.

**MATERIALS & TECH**  
**ROSETTA® WETCAST**

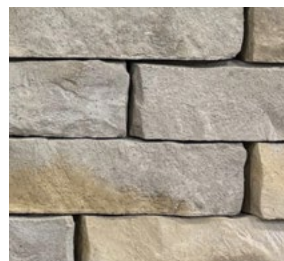
### BLOCK DIMENSIONS

- Wall Blocks (Untextured Flat Top): 15”L x 8”D x 4”H, 18”L x 8”D x 4”H, 21”L x 8”D x 4”H, 24”L x 8”D x 4”H, 27”L x 8”D x 4”H
- Wall Cap Blocks (Textured Finished Top): same sizes as wall blocks
- Corners: 18”L x 8”D x 4”H

Dimensions are nominal

COLOR  
OPTIONS

FOND DU LAC



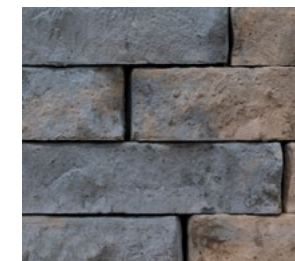
SLATE GRAY



LIMESTONE

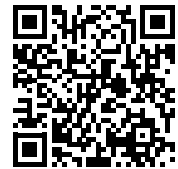


TERRAIN



Final color selection should be made from actual material which can be viewed at your local dealer location.





Learn More

Dimensional Wall in Fond Du Lac

## DIMENSIONAL

Simple and elegant: uniform size and generous assortment of natural textures, for garden walls and seat walls that are as beautiful as they are easy to build.

**MATERIALS & TECH**  
ROSETTA® WETCAST

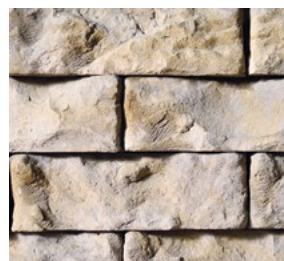
### BLOCK DIMENSIONS

• Straight: 12"L x 8"D x 4"H

Dimensions are nominal

COLOR  
OPTIONS

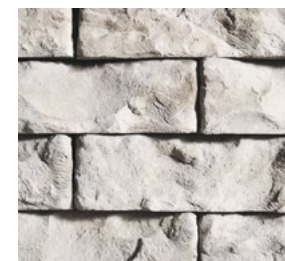
FOND DU LAC



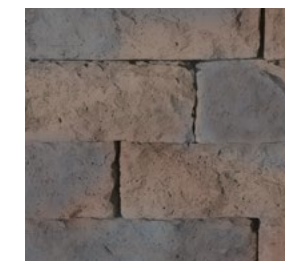
SLATE GRAY



LIMESTONE



TERRAIN



Final color selection should be made from actual material which can be viewed at your local dealer location.





Gauge Premier Slabs in Charcoal



Learn More

## GAUGE PREMIER

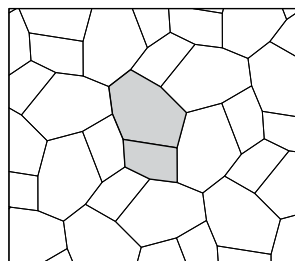
Large format, natural cleft flagstone texture with a gauged thickness, easy to install pattern and a salt-proof surface.

**MATERIALS & TECH**  
TEKTRAMAT®

### UNIT DIMENSIONS

- 44"L x 22"W x 1.25"H
- 26"L x 17"W x 1.25"H

PATTERN

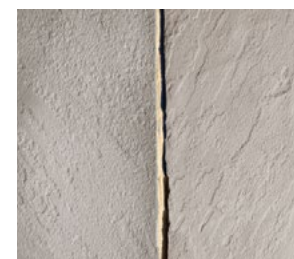


COLOR  
OPTIONS

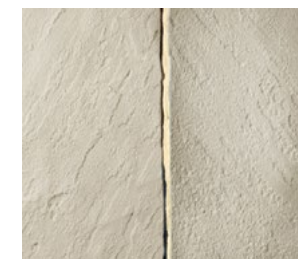
BLUESTONE



SUMMIT



DUNE



CHARCOAL



Final color selection should be made from actual material which can be viewed at your local dealer location.





Learn More

Metro Slabs in Summit

## METRO

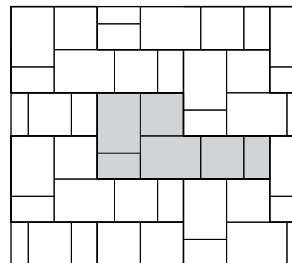
Large format, thermal-finish slabs with clean, modern lines, easy to install pattern and a salt-proof surface.

### MATERIALS & TECH TEKTRAMAT®

### UNIT DIMENSIONS

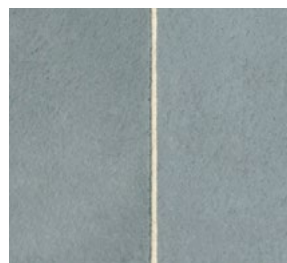
- 18"L x 30"W x 1.25"H
- 30"L x 30"W x 1.25"H
- 42"L x 30"W x 1.25"H

PATTERN

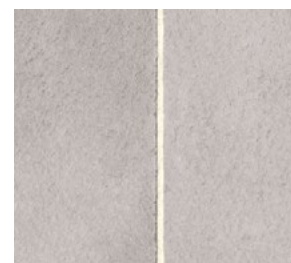


COLOR  
OPTIONS

BLUESTONE



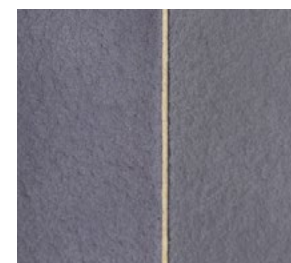
SUMMIT



DUNE



CHARCOAL



Final color selection should be made from actual material which can be viewed at your local dealer location.





Learn More

Tetra Natural Cleft Slabs in Bluestone

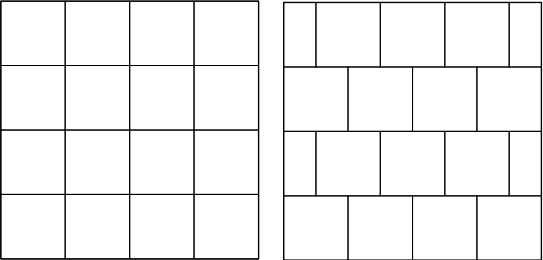
# TETRA NATURAL CLEFT

Bold, natural cleft textured slabs with modern styling, rapid installation, and a salt-proof surface.

**MATERIALS & TECH**  
TEKTRAMAT®

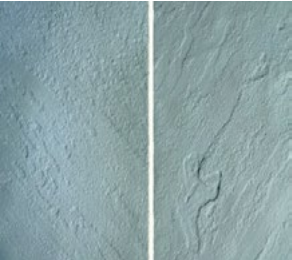
**UNIT DIMENSIONS**  
· 30"L x 30"W x 1.25"H

PATTERNS



COLOR  
OPTIONS

BLUESTONE



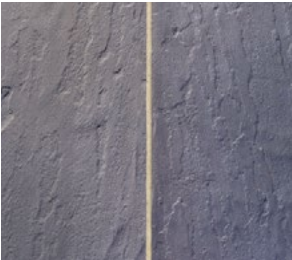
SUMMIT



DUNE



CHARCOAL



Final color selection should be made from actual material which can be viewed at your local dealer location.





Learn More

Tetra Thermal Slabs in Summit

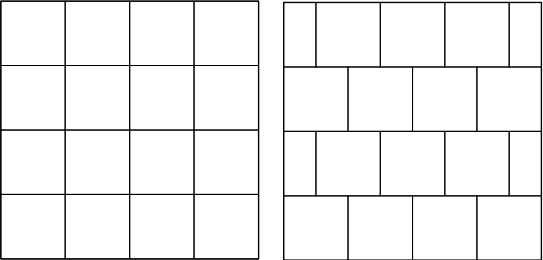
# TETRA THERMAL

Bold, thermal-finish slabs with modern styling, rapid installation, and a salt-proof surface.

**MATERIALS & TECH**  
TEKTRAMAT®

**UNIT DIMENSIONS**  
• 30"L x 30"W x 1.25"H

PATTERNS

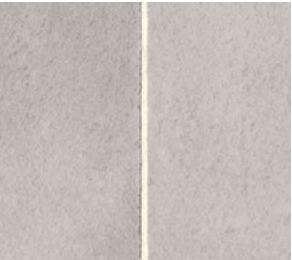


COLOR  
OPTIONS

BLUESTONE



SUMMIT



DUNE



CHARCOAL



Final color selection should be made from actual material which can be viewed at your local dealer location.





Arcadia Slabs in Dune and Summit Blend



Learn More

## ARCADIA

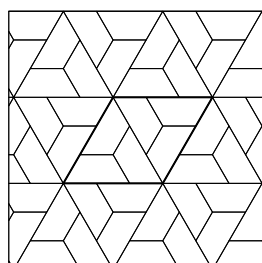
Bold, thermal-finish slabs with a salt-proof surface. The modern trapezoid shape allows for numerous pattern options and rapid installation.

**MATERIALS & TECH**  
TEKTRAMAT®

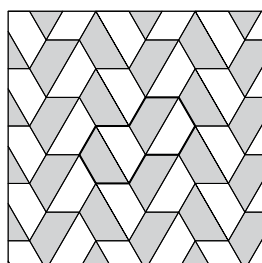
**UNIT DIMENSIONS**  
• 36"L x 15.5"W x 1.25"H

PATTERNS

ONE-COLOR



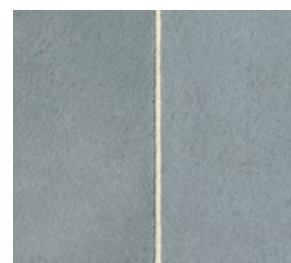
TWO-COLOR



Visit [highformat.com](https://highformat.com) for additional pattern ideas.

COLOR  
OPTIONS

BLUESTONE



SUMMIT



DUNE



CHARCOAL



Final color selection should be made from actual material which can be viewed at your local dealer location.





Grand Flagstone in Fond Du Lac



Learn More

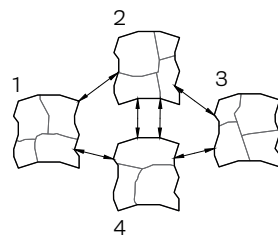
## GRAND FLAGSTONE

Irregular slabs providing a natural and timeless focal point for any landscape. Four interlocking layers all the same size, each with three to four unique pieces.

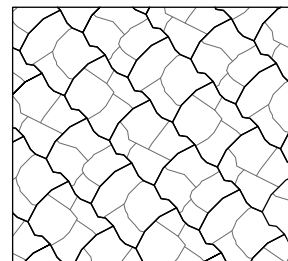
**MATERIALS & TECH**  
ROSETTA® WETCAST  
VIBRALOCK®

**LAYER DIMENSIONS**  
• 42"L x 38"W x 1.75"H

CONNECTING  
LAYERS

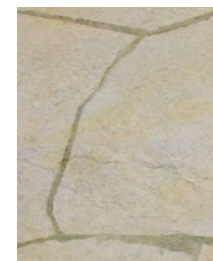


PATTERN



COLOR  
OPTIONS

FOND DU LAC



SLATE GRAY



LIMESTONE



TERRAIN



Final color selection should be made from actual material which can be viewed at your local dealer location.





Learn More

Dimensional Flagstone in Bluestone

# DIMENSIONAL FLAGSTONE

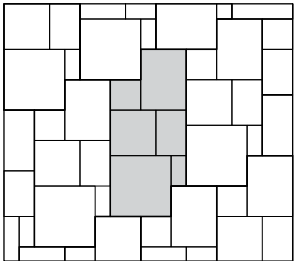
Six rectilinear shapes replicate the classic look of dimensional-cut sedimentary stone, with greater durability and more consistent edge profiles.

**MATERIALS & TECH**  
ROSETTA® WETCAST  
VIBRALOCK®

**UNIT DIMENSIONS**

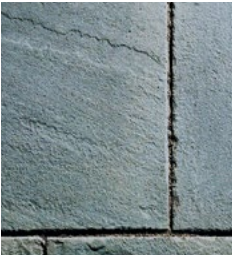
- 12"L x 6"W x 2"H
- 12"L x 12"W x 2"H
- 18"L x 12"W x 2"H
- 18"L x 18"W x 2"H
- 24"L x 18"W x 2"H
- 24"L x 24"W x 2"H

PATTERN



COLOR  
OPTIONS

BLUESTONE



FOND DU LAC



SLATE GRAY



LIMESTONE



TERRAIN



Final color selection should be made from actual material which can be viewed at your local dealer location.





New Mission in Slate Gray



Learn More

## NEW MISSION

Interlocking pavement on a generous scale, with showstopping texture and an elegant “random” pattern. Perfect for residential vehicular traffic.

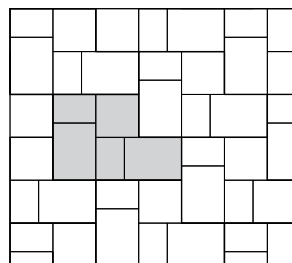
**MATERIALS & TECH**  
ROSETTA® WETCAST  
VIBRALOCK®

### UNIT DIMENSIONS

- 6”L x 9”W x 2.75”H
- 9”L x 9”W x 2.75”H
- 12”L x 9”W x 2.75”H

Nominal Dimensions

PATTERN



COLOR  
OPTIONS

FOND DU LAC



SLATE GRAY



BLUESTONE



LIMESTONE



TERRAIN



Final color selection should be made from actual material which can be viewed at your local dealer location.





Learn More

Superior Steppers in Slate Gray

# SUPERIOR STEPPERS

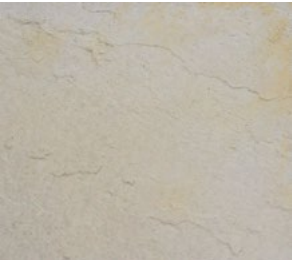
An assortment of eight generously-sized stepping stones, perfect for rustic walkways and meandering garden pathways.

**MATERIALS & TECH**  
ROSETTA® WETCAST

**UNIT DIMENSIONS**  
· 27"L x 21"W x 2"H  
Nominal Dimensions

COLOR  
OPTIONS

FOND DU LAC



SLATE GRAY



LIMESTONE



TERRAIN



Final color selection should be made from actual material which can be viewed at your local dealer location.





Learn More

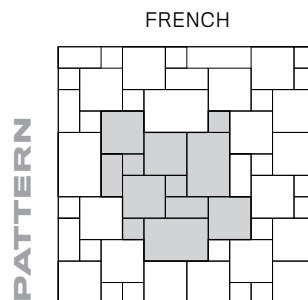
## SILVEREK

High-quality, antiqued natural travertine pavers in a mixture of warm taupe and gray shades.

**MATERIALS & TECH**  
NATURAL STONE: TRAVERTINE

### PATTERNS | UNITS

• French Pattern: Blend of 8"x8", 8"x16", 16"x16", 16"x24" at 1.25"H  
Contact your local rep for additional sizes and finishes.



FRENCH





Learn More



Learn More

## DEVON

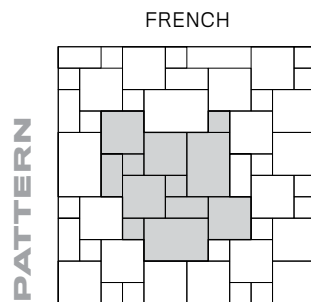
High-quality, antiqued natural travertine pavers in blends of taupes and browns.

**MATERIALS & TECH**  
NATURAL STONE: TRAVERTINE

### PATTERNS | UNITS

- French Pattern: Blend of 8"x8", 8"x16", 16"x16", 16"x24" at 1.25"H

Contact your local rep for additional sizes and finishes.



## CHAMPAGNE

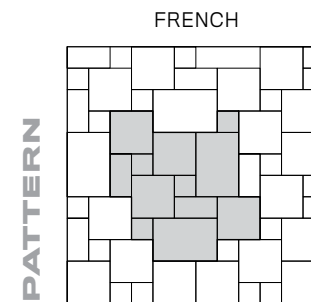
High-quality, antiqued natural travertine pavers in blends of cream and taupe.

**MATERIALS & TECH**  
NATURAL STONE: TRAVERTINE

### PATTERNS | UNITS

- French Pattern: Blend of 8"x8", 8"x16", 16"x16", 16"x24" at 1.25"H

Contact your local rep for additional sizes and finishes.







Learn More



Learn More

## AZURE

High-quality natural marble pavers in cool grays and soft blue tones.

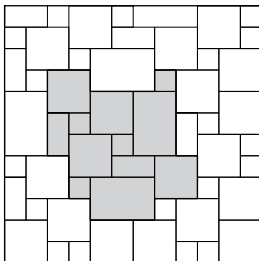
**MATERIALS & TECH**  
NATURAL STONE: MARBLE

### PATTERNS | UNITS

- French Pattern: Blend of 8"x8", 8"x16", 16"x16", 16"x24" at 1.25"H

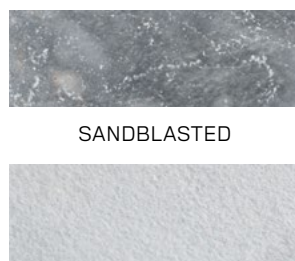
Contact your local rep for additional sizes and finishes.

PATTERN



FRENCH

TEXTURE  
OPTIONS



ANTIQUED

SANDBLASTED

## GLACIER

High-quality natural marble pavers in cool grays and soft white tones.

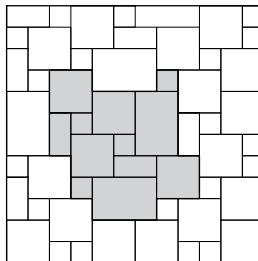
**MATERIALS & TECH**  
NATURAL STONE: MARBLE

### PATTERNS | UNITS

- French Pattern: Blend of 8"x8", 8"x16", 16"x16", 16"x24" at 1.25"H

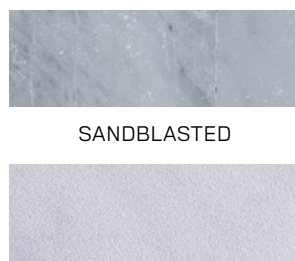
Contact your local rep for additional sizes and finishes.

PATTERN



FRENCH

TEXTURE  
OPTIONS



ANTIQUED

SANDBLASTED





Learn More

## PEWTER NATURAL CLEFT

High-quality, tumbled natural cleft stone pavers in gray tones with true dimensions designed for tight joints.

**MATERIALS & TECH**  
NATURAL STONE: SANDSTONE

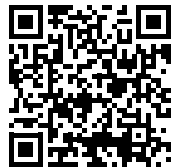
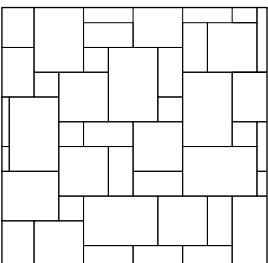
### PATTERNS | UNITS

- Pattern: Blend of 12"x12", 12"x24", 24"x24", 24"x36" at 1"± H

Contact your local rep for additional sizes and finishes.

See website for full pattern

PATTERN



Learn More

## BELLAIRE BLUE NATURAL CLEFT

High-quality, tumbled natural cleft pavers in a bluish green tone designed for tight joints.

**MATERIALS & TECH**  
NATURAL STONE: LIMESTONE

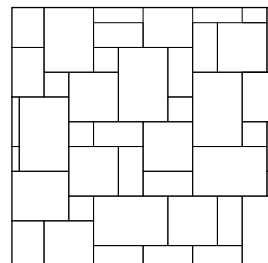
### PATTERNS | UNITS

- Pattern: Blend of 12"x12", 12"x24", 24"x24", 24"x36" at 1"± H

Contact your local rep for additional sizes and finishes.

See website for full pattern

PATTERN







Learn More



Learn More

## ONYX THERMAL

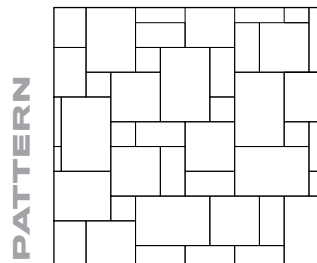
High-quality, tumbled thermal stone pavers in dark gray tones with true dimensions designed for tight joints.

**MATERIALS & TECH**  
NATURAL STONE: GRANITE

### PATTERNS | UNITS

- Pattern: Blend of 12"x12", 12"x24", 24"x24", 24"x36" at 1"± H
- Contact your local rep for additional sizes and finishes.

See website for full pattern



## BASALT THERMAL

High-quality, tumbled thermal stone accent pavers in dark gray tones with true dimensions designed for tight joints.

**MATERIALS & TECH**  
NATURAL STONE: BASALT

### PATTERNS | UNITS

- Accent Paver: 6"x12" at 1.25"± H
- Contact your local rep for additional sizes and finishes.





5' Empire Steps in Fond Du Lac



Learn More

# EMPIRE STEPS

Beautiful and durable step treads with a crisp splitface texture on all four sides, a lightly textured walking surface and a consistent 7-inch rise.

**MATERIALS & TECH**  
**ROSETTA® WETCAST**

COLOR  
OPTIONS

FOND DU LAC



SLATE GRAY



LIMESTONE



TERRAIN



Final color selection should be made from actual material which can be viewed at your local dealer location.

FACE  
TEXTURE

SPLITFACE



SIZE AND  
UNITS

### 3' STEP

Dimensions: 36"L x 18"W x 7"H



### 4' STEP

Dimensions: 48"L x 21"W x 7"H



### 5' STEP

Dimensions: 60"L x 24"W x 7"H



### 6' STEP

Dimensions: 72"L x 30"W x 7"H



### 8' STEP

Dimensions: 96"L x 24"W x 7"H



### STEP RISERS

- 18"L x 7"W x 7"H
- 36"L x 7"W x 7"H

Nominal Dimensions



Step riser example layout





**Irregular Steps in Fond Du Lac**



Learn More

# IRREGULAR STEPS

The upscale look of weathered limestone slabs, with greater durability and a consistent 7-inch rise.

**MATERIALS & TECH**  
ROSETTA® WETCAST

COLOR  
OPTIONS

FOND DU LAC



SLATE GRAY



LIMESTONE



TERRAIN



Final color selection should be made from actual material which can be viewed at your local dealer location.

SIZE AND  
UNITS

**STANDARD  
(RANDOM ASSORTMENT)**  
Dimensions are nominal.  
Face Texture: Weathered



**UNIT 1**  
Dimensions: 54"L x 24"W x 7"H



**UNIT 2**  
Dimensions: 60"L x 24"W x 7"H



**UNIT 3**  
Dimensions: 48"L x 28"W x 7"H



**UNIT 4**  
Dimensions: 48"L x 24"W x 7"H

**6' IRREGULAR  
(1 OF EACH PER PALLET)**  
Dimensions: 72"L x 30"W x 7"H  
Dimensions are nominal.  
Face Texture: Snapped



**UNIT 1**



**UNIT 2**



**UNIT 3**








6' Dimensional Steps in Limestone

## OTHER STEPS

Complete your projects with a series of coordinating step options, including: Dimensional Steps having the look of quarried stone treads, and Heartwood Steps with beautiful, wood-grain textures.

**MATERIALS & TECH**  
**ROSETTA® WETCAST**


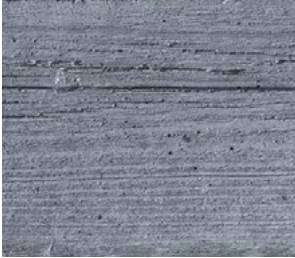


### DIMENSIONAL STEPS

COLOR OPTIONS	FOND DU LAC	SLATE GRAY	LIMESTONE	TERRAIN
				

Final color selection should be made from actual material which can be viewed at your local dealer location.

FACE TEXTURE	SNAPPED		
			
SIZE AND UNITS	4' STEP Dimensions: 48"L x 18"W x 7"H		6' STEP Dimensions: 72"L x 30"W x 7"H
			

### HEARTWOOD STEPS

COLOR OPTIONS	FOND DU LAC	SLATE GRAY	LIMESTONE	TERRAIN
				

Final color selection should be made from actual material which can be viewed at your local dealer location.

FACE TEXTURE	TIMBER	
		
SIZE AND UNITS	4' STEP Dimensions: 48"L x 24"W x 6"H	





Belvedere® Fire Pit Kit in Slate Gray

# BELVEDERE® FIRE PIT

Rustic and rich in texture with the impact of natural fieldstone, this welcome addition provides warmth both literally and stylistically.

**MATERIALS & TECH**  
ROSETTA® WETCAST

**FINISHED DIMENSIONS**  
• 58" Diameter x 14-1/2"H

COLOR  
OPTIONS

FOND DU LAC



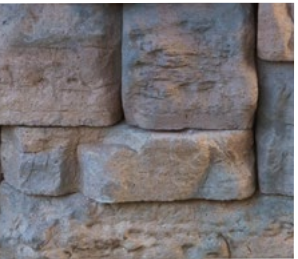
SLATE GRAY



LIMESTONE



TERRAIN



Final color selection should be made from actual material which can be viewed at your local dealer location.

INSERT  
OPTIONS

## STANDARD

Burn Mechanism: Steel Liner in Black  
Fuel: Wood  
Internal Area: 36" Diameter  
Lid: N/A



## SMOKELESS

Burn Mechanism: Breco® Smokeless Liner  
in Stainless Steel  
Fuel: Dry Wood  
Internal Area: 30" Diameter  
Lid: Stainless Steel Included



## GAS

Burn Mechanism: Gas Burner with Steel  
Pan in Black  
Fuel: Natural Gas / LP\*  
Internal Area: 36" Diameter  
Kit: Includes Media and Log Set  
Lid: N/A

\*LP to be specified at the time of ordering







**Kodah® Fire Pit Kit in Fond Du Lac  
with Breeo® Smokeless Insert**



Learn More

# KODAH® FIRE PIT

Boasting snapped limestone textures and enough ledge surface for all your drinks and s'mores.

**MATERIALS & TECH**  
ROSETTA® WETCAST

**FINISHED DIMENSIONS**  
· 51"L x 51"W x 12"H

COLOR  
OPTIONS

FOND DU LAC



SLATE GRAY



LIMESTONE



TERRAIN



Final color selection should be made from actual material which can be viewed at your local dealer location.

INSERT  
OPTIONS

## STANDARD

Burn Mechanism: Steel Liner in Black  
Fuel: Wood  
Internal Area: 28" Square  
Lid: N/A



## SMOKELESS

Burn Mechanism: Breeo® Smokeless Liner  
in Stainless Steel  
Fuel: Dry Wood  
Internal Area: 24" Square  
Lid: Stainless Steel Included



## GAS

Burn Mechanism: Gas Burner with Steel  
Pan in Black  
Fuel: Natural Gas / LP\*  
Internal Area: 28" Square  
Kit: Includes Media and Log Set  
Lid: N/A

\*LP to be specified at the time of ordering







Learn More

Dimensional Fire Pit Kit in Fond Du Lac

## DIMENSIONAL FIRE PIT

Thirty-six blocks plus one liner equals a firepit anyone can build. Simple elegance to add warmth to your outdoor space.

**MATERIALS & TECH**  
ROSETTA® WETCAST

**FINISHED DIMENSIONS**  
· 44"L x 44"W x 12"H

COLOR  
OPTIONS

FOND DU LAC



SLATE GRAY



LIMESTONE



TERRAIN



Final color selection should be made from actual material which can be viewed at your local dealer location.

INSERT  
OPTIONS

### STANDARD

Burn Mechanism: Steel Liner in Black  
Fuel: Wood  
Internal Area: 28" Square  
Lid: N/A



### SMOKELESS

Burn Mechanism: Breeo® Smokeless Liner  
in Stainless Steel  
Fuel: Dry Wood  
Internal Area: 24" Square  
Lid: Stainless Steel Included



### GAS

Burn Mechanism: Gas Burner with Steel  
Pan in Black  
Fuel: Natural Gas / LP\*  
Internal Area: 28" Square  
Kit: Includes Media and Log Set  
Lid: N/A

\*LP to be specified at the time of ordering







Dimensional Coping in Superior Buff



Camden Coping in Summit

# DIMENSIONAL COPING

Natural textures and a chiseled edge combined with modern shapes and consistent thickness, creates a stunning finish.

## MATERIALS & TECH ROSETTA® WETCAST

### UNIT DIMENSIONS

- 24"L x 12.5"D x 2.5"H
- 18"L x 12.5"D x 2.5"H
- 19"L x 12.5"D x 2.5"H (End)

SUPERIOR BUFF

SLATE GRAY

LIMESTONE



COLOR  
OPTIONS

# CAMDEN COPING

An attractive wall accent or stair tread, rock-faced on front and back, with a lightly surfaced top and a wear-proof surface.

## MATERIALS & TECH TEKTRAMAT®

### UNIT DIMENSIONS

- 48"L x 12"D x 2"H

BLUESTONE

SUMMIT

DUNE

CHARCOAL



COLOR  
OPTIONS





Belvedere® Coping in Terrain



Azure Antiqued Marble Bullnose Coping

# BELVEDERE® COPING

A weathered fieldstone texture highlighted by irregular shapes. Perfect for seat and retaining wall applications.

## MATERIALS & TECH ROSETTA® WETCAST

### UNIT DIMENSIONS

- 6"L x 10.25"D x 2.25"H
- 12"L x 10.25"D x 2.25"H
- 18"L x 10.25"D x 2.25"H
- 18"L x 10.25"D x 2.25"H (Left End)
- 18"L x 10.25"D x 2.25"H (Right End)

COLOR  
OPTIONS

FOND DU LAC

SLATE GRAY

LIMESTONE

TERRAIN

# NATURAL STONE COPING & TREADS

High-quality coping that coordinates with our natural stone pavers

## MATERIALS & TECH NATURAL STONE

Contact your local rep for additional sizes, colors, finishes and profiles.

### BULLNOSE EDGE (12"D X 24"L X 2"H)

OPTIONS

SILVEREK ANTIQUED TRAVERTINE

DEVON ANTIQUED TRAVERTINE

CHAMPAGNE ANTIQUED TRAVERTINE

AZURE ANTIQUED MARBLE

GLACIER ANTIQUED MARBLE

GLACIER SANDBLASTED MARBLE

### EASED EDGE ON TWO SIDES, TUMBLED (12"D X 24"L X 2"H)

OPTIONS

PEWTER NATURAL CLEFT

BELLAIRE BLUE NATURAL CLEFT

ONYX THERMAL

### ROCKFACED ON TWO SIDES, TUMBLED (12"D X 24"L X 2"H)

OPTIONS

PEWTER NATURAL CLEFT

BELLAIRE BLUE NATURAL CLEFT

ONYX THERMAL





27" Belvedere® Texture Dimensional Cap in Slate Gray



Learn More



34" Camden Cap in Summit



Learn More

# DIMENSIONAL CAP

Large format and subtle textures, designed to coordinate with HIGH FORMAT® wall products.

## MATERIALS & TECH ROSETTA® WETCAST

### UNIT DIMENSIONS

- Available Sizes
- 24"L x 24"D x 2.5"H
  - 27"L x 27"D x 2.5"H
  - 30"L x 30"D x 3"H
  - 34"L x 34"D x 3"H

# CAMDEN CAP

Durable and attractive pillar caps, rock-faced on four sides, with a lightly textured top. Resistant to UV degradation.

## MATERIALS & TECH TEKTRAMAT®

### UNIT DIMENSIONS

- Available Sizes
- 24"L x 24"D x 2.25"H
  - 28"L x 28"D x 2.25"H
  - 34"L x 34"D x 2.25"H

### 24", 30" AND 34"

SUPERIOR BUFF

SLATE GRAY

LIMESTONE



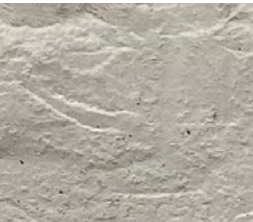
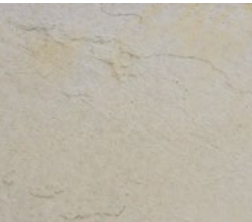
### 27" (BELVEDERE® TEXTURE)

FOND DU LAC

SLATE GRAY

LIMESTONE

TERRAIN



### 24", 28" AND 34"

BLUESTONE

SUMMIT

DUNE

CHARCOAL







## LIFETIME LIMITED WARRANTY

We want you to feel comfortable and confident when starting your project. That's why we make sure you have the resources you need to get the job done right. Everything we make, we back with a lifetime limited warranty.

HIGH FORMAT® products as manufactured by HIGH FORMAT® are backed by a lifetime limited warranty from the manufacturer to the original end user for products used in residential applications. This assurance of product quality guarantees the structural integrity of these products and is applicable where products have been correctly installed to manufacturer's specifications. Any properly installed hardscape material manufactured by HIGH FORMAT® that structurally fails due to the concrete in the product not meeting the design strength specification will be replaced by the manufacturer. The following items are not covered by this warranty: color variances and the appearance of surface stains resulting from chemical reasons such as efflorescence or differential curing; damage caused by installation, misuse or abuse of the materials; deterioration caused by de-icing salts or fertilizers; damage resulting from sub-grade settlement or movement; hairline cracks that do not affect the structural performance of the product; spalling of less than three percent of the surface area; contact with chemicals or paint; discoloration due to airborne contamination, staining, oxidation, or improper sealing (collectively, "Exclusions"). Products purchased must be registered with the manufacturer within 60 days of end user's purchase for warranty to be valid. You may register your project at [HIGHFORMAT.COM/WARRANTY](https://www.highformat.com/warranty).

HIGH FORMAT® EXPRESSLY DISCLAIMS ANY WARRANTY, EXPRESS OR IMPLIED, RELATED TO THE EXCLUSIONS DESCRIBED ABOVE. FURTHER, HIGH FORMAT® EXPRESSLY DISCLAIMS ANY WARRANTY, EXPRESS OR IMPLIED, RELATED TO PRODUCTS DESIGNED AND MANUFACTURED BY MANUFACTURERS OTHER THAN HIGH FORMAT®. ALL NATURAL STONE PRODUCTS SOLD BY HIGH FORMAT® ARE SOLD "AS-IS".

All warranty claims must be made prior to the removal or disposal of the defective product. Warranty claims will be reviewed by a company representative and may require samples of defective product for analysis. Warranty does not include removal, installation, or transportation to replace the material. Warranty is not transferable and is extended to the original end user only. Proof of purchase is required.

**For additional questions please contact us at (877) 777-6558**

NOTE: This warranty applies to Wetcast, TEKTRAMAT®, and VIBRALOCK® products only; natural stone products are sold "as-is" and are therefore not covered by any warranty.

## GENERAL INFORMATION

### COLOR

We at HIGH FORMAT®, along with our media partners, do our best to produce print and digital materials that accurately reflect the true shades and tones of our product. However, we cannot guarantee perfect color matching for project photos, color swatches, or other picture representations. Final color selection should be made from actual material which can be viewed at your local dealer location.

Integral pigments are incorporated into the raw materials for all HIGH FORMAT® products to intentionally produce subtle shades and color variations throughout each block or paver. Therefore no product seen in a photograph will be precisely duplicated. For the most natural appearance, install products from multiple pallets simultaneously. This will create a blended, natural look.

### EFFLORESCENCE

Efflorescence is a naturally occurring, chalky, white residue commonly found on concrete surfaces. The presence of efflorescence in no way degrades the integrity of any product. It can usually be removed with efflorescence cleaners and often washes away over time. HIGH FORMAT® does not cover the presence of efflorescence under warranty.

### PACKAGING

Variation in color can occur where packaging comes into contact with the product. Often, these variations will fade with time. This does not affect the integrity of the material, and it is not considered to be a defect. Color variation caused by contact with packaging materials is not covered under warranty.

### POLYMERIC HAZE

Improper installation of ancillary polymeric sand products may result in the presence of polymeric haze. This discoloration can potentially mute the vibrant colors of concrete products. Hazing is not indicative of the quality of the HIGH FORMAT® product, and should not be considered a source of concern for the product's durability. Because HIGH FORMAT® cannot regulate selection or installation of aftermarket accessory materials, we do not warranty against the presence of polymeric haze. In general, polymeric haze can be cleaned and washes away over time.

### HEAVY EQUIPMENT

The broad surface dimensions of HIGH FORMAT®'s slab products are not engineered for vehicular traffic and compaction equipment.

### NORMAL MAINTENANCE AND CARE

As with any product that is continually exposed to the natural environment, cleaning and care may be desired over time to maintain the appearance of your hardscapes. Generous rinsing with water and light scrubbing with a stiff, plastic bristle brush is generally the best way to remove dirt that has accumulated over time. Cleaners and mild detergent designed to be used on concrete products may be used as well. Always follow all manufacturer instructions and test on a small area when using any cleaner. Power washers may cause damage at close range.

### WINTER CARE

All metal snow shovels and snow blower blades have the potential to damage concrete surfaces. All snowplows, snow blowers and shovels used to clear HIGH FORMAT® products of snow should use plastic blades or guards. De-icing salts will damage concrete and should not be used with HIGH FORMAT® products unless they are made with TEKTRAMAT® technology. HIGH FORMAT® does not cover damage done by snow removal, de-icing, or improper loading under warranty.

### NATURAL STONE

Natural stone is a product of nature. Surface texture and color will vary piece to piece and crate to crate. Our partnering quarries work hard to ship consistent, high quality product, but you should expect variation. Samples are suggested, but will not guarantee color. We highly recommend all material be delivered prior to installation and that available material is blended throughout your project. Each installation will be uniquely different and perfectly created in nature!





**HIGHFORMAT.COM**  
(877) 777-6558

05481 US 31 SOUTH  
CHARLEVOIX, MI 49720