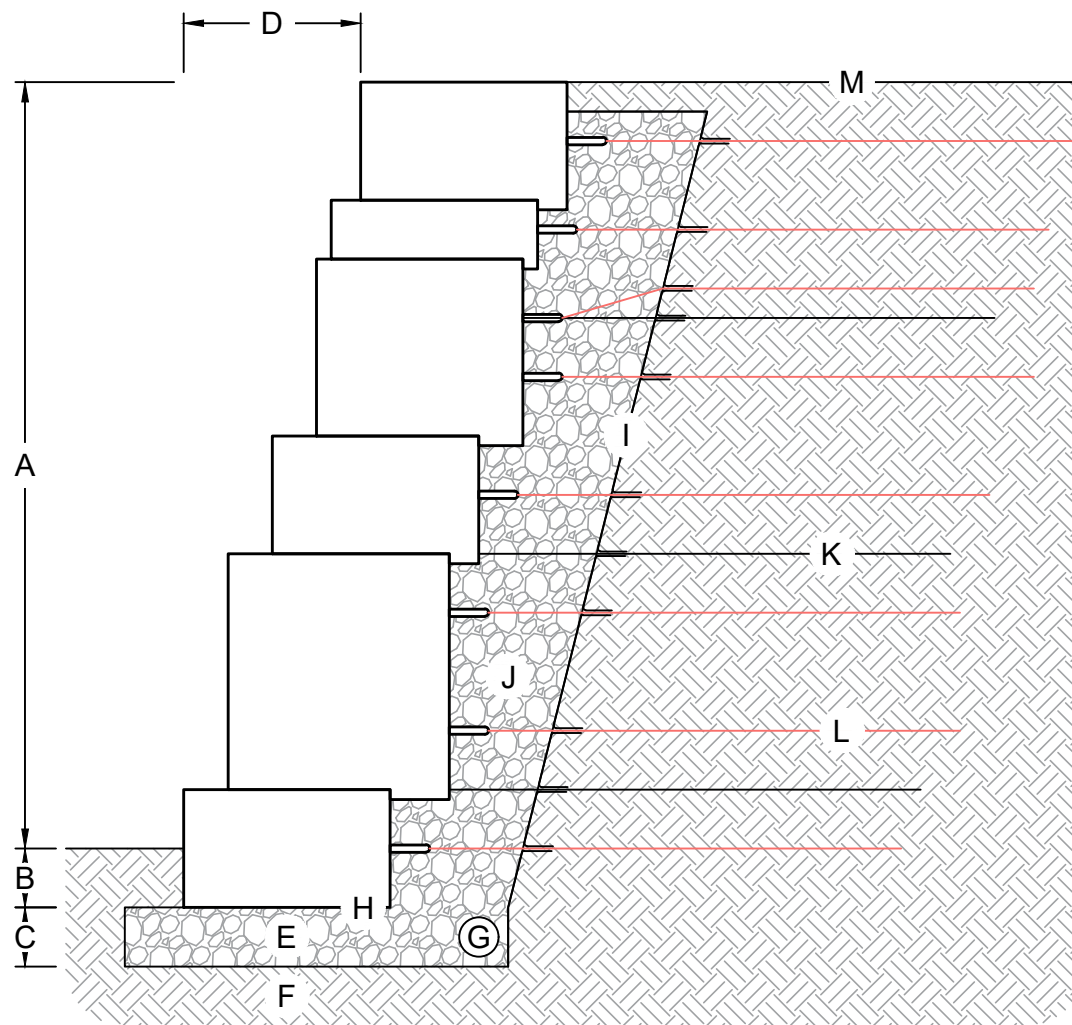


PRELIMINARY DETAIL  
NOT FOR FINAL CONSTRUCTION



**TYPICAL RETAINING WALL WITH SOIL REINFORCEMENT**  
(NO SCALE)

- A. Wall height above grade (varies)
- B. Wall buried beneath grade (varies by design)
- C. Leveling pad depth (varies by design)
- D. 3" setback per 12" vertical (14')
- E. Crushed stone leveling pad
- F. Foundation soil compacted to 95% max. dry density
- G. 4" corrugated perforated drain pipe
- H. Shear heel removed from base block
- I. Min. 3.5 oz. non-woven geotextile fabric (recommended)
- J. Drainstone (ASTM #57), min. 12" behind wall
- K. Geogrid, abutting the backside of the block (length, vertical placement, and geogrid type varies by design)
- L. Paraweb strap installed on every loop (embedment depth varies by design, maintain min. 3" vertical from geogrid)
- M. Finish grade to drain away from the wall

This drawing is for reference only. Determination of the suitability and/or manner of use of any details contained in this document is the sole responsibility of the design engineer of record. Final project designs, including all construction details, shall be prepared by a licensed professional engineer using the actual conditions of the proposed site.

DRAWN BY: BOB/CARISSA

TITLE:

APPROVED BY:

OUTCROPPING RETAINING WALL WITH SOIL REINFORCEMENT

DATE: 11/17/2021

SHEET NO.: 1 OF 1

DRAWING TITLE: Outcropping Typical Details.dwg



05481 US 31 SOUTH, CHARLEVOIX, MI 49720  
877-777-6558 • highformat.com